

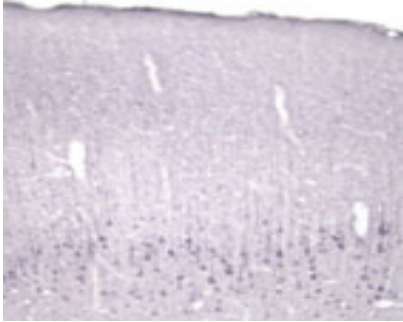
## Rabbit antibody to rh NT4: IgG

<b>Catalogue No.:</b>	R-102-500
<b>Description:</b>	FUNCTION: Target-derived survival factor for peripheral sensory sympathetic neurons. SUBCELLULAR LOCATION: Secreted protein. TISSUE SPECIFICITY: Highest levels in prostate, lower levels in thymus, placenta, and skeletal muscle. Expressed in embryonic and adult tissues. SIMILARITY: Belongs to the NGF-beta family.
<b>Batch No.:</b>	See product label
<b>Unit size:</b>	500 ug
<b>Antigen:</b>	Recombinant human NT4
<b>Other Names:</b>	Neurotrophin-5; NT-5; Neurotrophic factor 5; Neurotrophin-4; NT-4; Neurotrophic factor 4; NTF5; NTF4
<b>Accession:</b>	NT5_HUMAN
<b>Produced in:</b>	Rabbit
<b>Purity:</b>	Protein G purified IgG
<b>Applications:</b>	IHC, ELISA (1 site), Western Blot, ICC, inhibition of biological activity in vitro/in vivo. Recommended to be used at a concentration of 1-10 ug/mL for immunohistochemistry, ELISA, ICC and Western blot and inhibition of biological activity in vitro. Use neat for in vivo studies at 2-10 ug/mL (ED50). Note that the concentration of NT4 is generally low in most tissues nevertheless, neonatal testes of rat can be used as a good positive control. Biosensis recommends optimal dilutions/concentrations should be determined by the end user.
<b>Specificity:</b>	Less than 1% cross-reactivity against NGF, recombinant human BDNF and 5% to NT3 has been shown by dot blot.
<b>Cross-reactivity:</b>	Known to react with NT4 from rat and human, mouse and monkey.
<b>Form:</b>	Lyophilised, Antibody is carrier-free. It contain no BSA or any other protein or sugar added. The material has been lyophilized from simple PBS buffer (10 mM phosphate, 150 mM NaCl, pH 7.2-7.6) without addition of sodium azide or other preservatives.
<b>Reconstitution:</b>	Reconstitute in 500 uL of sterile water. Centrifuge to remove any insoluble material.
<b>Storage:</b>	After reconstitution keep aliquots at -20C for a higher stability, and at 2-8C with an appropriate antibacterial agent. Avoid repetitive freeze/thaw cycles. Glycerol (1:1) may be added for an additional stability.
<b>Expiry Date:</b>	12 months after purchase
<b>References:</b>	1. Lodouichi (2000) J. Neuroscie. 20(6): 2155 2. Zhang et al. (1999) J Neurosci. Meths. 89 (1): 69

---

FOR RESEARCH USE ONLY

## Rabbit antibody to rh NT4: IgG



Immunohistochemical staining of Neurotrophin 4/5 (NT4/5) in rat cortex using rabbit polyclonal to recombinant human NT4, catalogue number R-102-500

biosensis

---

FOR RESEARCH USE ONLY