

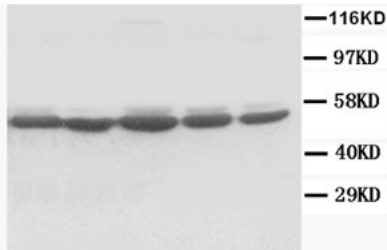
## Rabbit polyclonal antibody to c-FOS (170-187): Affinity purified

<b>Catalogue No.:</b>	R-1359-100
<b>Description:</b>	FUNCTION: Nuclear phosphoprotein which forms a tight but non-covalently linked complex with the JUN/AP-1 transcription factor. Has a critical function in regulating the development of cells destined to form and maintain the skeleton. It is thought to have an important role in signal transduction, cell proliferation and differentiation. SUBUNIT: Heterodimer. Interacts with DSIPI; this interaction inhibits the binding of active AP1 to its target DNA. Interacts with MAFB. SUBCELLULAR LOCATION: Nucleus. INDUCTION: C-fos expression increases upon a variety of stimuli, including growth factors, cytokines, neurotransmitters, polypeptide hormones, stress and cell injury. SIMILARITY: Belongs to the bZIP family. Fos subfamily. SIMILARITY: Contains 1 bZIP domain.
<b>Batch No.:</b>	See product label
<b>Unit size:</b>	100 µg
<b>Antigen:</b>	A synthetic peptide (DQLEDEKSALQTEIANLL) corresponding to a region (170-187 aa) from human cFOS.
<b>Sequence:</b>	DQLEDEKSALQTEIANLL
<b>Antibody Type:</b>	Antiserum
<b>Other Names:</b>	c-Fos; Proto-oncogene protein cFOS; cellular oncogene fos; G0/G1 switch regulatory protein 7; FOS; G0S7
<b>Accession:</b>	P01100 FOS_HUMAN;
<b>Produced in:</b>	Rabbit
<b>Applications:</b>	Western Blotting (WB). A concentration of 1.0 µg/ml is recommended for WB. Human cFOS has a predicted length of 380 amino acids and MW of 41 kDa. Biosensis recommends optimal dilutions/concentrations should be determined by the end user.
<b>Specificity:</b>	The specificity of this antibody has been confirmed by WB against the antigen.
<b>Antibody Against:</b>	cFOS
<b>Cross-reactivity:</b>	Human; rat; predicted to react with mouse due to sequence homology;
<b>Form:</b>	Lyophilised with 5mg BSA, 0.9mg NaCl, 0.2mg Na <sub>2</sub> HPO <sub>4</sub> , 0.05mg Thimerosal, 0.05mg Na <sub>3</sub>
<b>Appearance:</b>	Lyophilized white powder
<b>Reconstitution:</b>	Reconstitute in 100 µl of sterile distilled water to achieve an antibody concentration of 1 mg/ml. Centrifuge to remove any insoluble material.
<b>Storage:</b>	At least 12 months after purchase at 2 - 4°C (lyophilized formulations). After reconstitution, aliquot and store at -20°C for a higher stability. Avoid freeze-thaw cycles.
<b>Expiry Date:</b>	12 months after purchase

---

FOR RESEARCH USE ONLY

## Rabbit polyclonal antibody to c-FOS (170-187): Affinity purified



Western Blot using Rabbit polyclonal antibody to cFOS: Lane 1: MM453 Whole cell lysate Lane 2: MM231 Whole cell lysate Lane 3: HeLa Whole cell lysate Lane 4: HT1080 Whole cell lysate Lane 5: Colo320 Whole cell lysate

biosensis

---

FOR RESEARCH USE ONLY

---