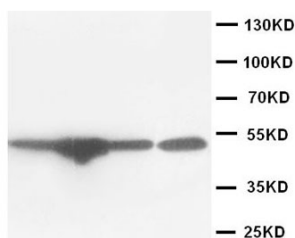


## Rabbit polyclonal antibody to Endothelin B receptor (244-258): Affinity purified

<b>Catalogue No.:</b>	R-1051-100
<b>Description:</b>	THIS PRODUCT IS TEMPORARILY OUT OF STOCK. PLEASE REFER TO THE "REPLACED BY" FIELD BELOW TO LOCATE THE CURRENT BIOSENSIS PRODUCT TO MEET YOUR RESEARCH NEEDS. The Endothelin B receptor is a multi-pass membrane protein that belongs to the G-protein coupled receptor 1 family. It acts as a non-specific receptor for endothelin 1, 2, and 3.
<b>Batch No.:</b>	See product label
<b>Unit size:</b>	100 ug
<b>Antigen:</b>	A synthetic peptide corresponding to a region (244-258 aa) from human Endothelin B receptor. To enhance the immunological response, this peptide was coupled to carrier protein BSA.
<b>Other Names:</b>	ET-B; EDNRB; ETRB;
<b>Accession:</b>	P24530 EDNRB_HUMAN;
<b>Produced in:</b>	Rabbit
<b>Purity:</b>	Affinity purified on antigen column
<b>Applications:</b>	Western Blotting (WB). A concentration of 0.1-0.5 ug/mL is recommended for WB. Human Endothelin B receptor has a predicted length of 442 residues and MW of 50 kDa. Biosensis recommends optimal dilutions/concentrations should be determined by the end user.
<b>Specificity:</b>	The specificity of this antibody has been confirmed by WB against the antigen.
<b>Cross-reactivity:</b>	Human;
<b>Form:</b>	Lyophilised with 5mg BSA, 0.9mg NaCl, 0.2mg Na <sub>2</sub> HPO <sub>4</sub> , 0.05mg Thimerosal, 0.05mg NaN <sub>3</sub>
<b>Reconstitution:</b>	Reconstitute in 100 uL of sterile distilled water to achieve an antibody concentration of 1 mg/mL. Centrifuge to remove any insoluble material.
<b>Storage:</b>	At least 12 months after purchase at 2-8C (lyophilized formulations). After reconstitution, aliquot and store at -20C for a higher stability. Avoid freeze-thaw cycles
<b>Expiry Date:</b>	12 months after purchase



Western Blot image of Rabbit polyclonal antibody to Endothelin B receptor (R-1051-100) in the following cell types: Lane 1: MM453 Cell Lysate, Lane 2: Hela Cell Lysate, Lane 3: Jurkat Cell Lysate and Lane 4: SW620 Cell Lysate.

FOR RESEARCH USE ONLY