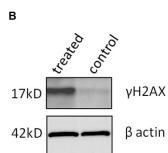
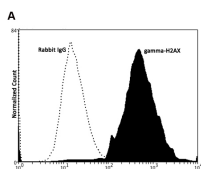


## Rabbit polyclonal antibody to gamma-H2AX (phospho S140): Affinity purified

<b>Catalogue No.:</b>	R-1555-100
<b>Description:</b>	THIS PRODUCT HAS BEEN SUPERCEDED. PLEASE REFER TO THE "REPLACED BY" FIELD BELOW TO LOCATE THE CURRENT BIOSENSIS PRODUCT TO MEET YOUR RESEARCH NEEDS. H2AX belongs to the histone H2A family. The four core histones involved in the formation of the nucleosome structure of compacted chromatin are H2A, H2B, H3, and H4. H2AX is phosphorylated on Ser-140 to form gamma-H2AX in response to DNA double-strand breaks.
<b>Batch No.:</b>	See product label
<b>Unit size:</b>	100 µg
<b>Antigen:</b>	Synthetic peptide from a region surrounding phosphorylated serine 140 of human H2AX (134-143 aa).
<b>Sequence:</b>	KKATQASQEY
<b>Other Names:</b>	H2AX139ph; Histone H2A.x; H2a/x; H2AFX; H2AX; Histone H2AX; Histone H2AFX; Histone H2A/X; gamma H2AX;
<b>Accession:</b>	P16104 H2AX_HUMAN;
<b>Produced in:</b>	Rabbit
<b>Applications:</b>	Western Blotting at a suggested dilution of 1:1,000, Flow Cytometry (2ug/10 <sup>6</sup> cells). Biosensis recommends optimal dilutions/concentrations should be determined by the end user.
<b>Species Against:</b>	Human;
<b>Cross-reactivity:</b>	This antiserum detects phosphorylated H2AX only.
<b>Form:</b>	Lyophilised
<b>Reconstitution:</b>	Reconstitute in 100 µl of sterile distilled water. Centrifuge to remove any insoluble material.
<b>Storage:</b>	At least 12 months after purchase at 2 - 4°C (lyophilized formulations). After reconstitution, aliquot and store at -20°C for a higher stability and at 4°C with an appropriate antibacterial agent. Avoid freeze-thaw cycles.
<b>Expiry Date:</b>	12 months after purchase



A: Specific staining of gamma-H2AX expressed in human neuroblastoma SH-SY5Y cell line by Flow Cytometry using cat # R-1555-100. Fixing and Permeabilization of cells: Absolute methanol (10 minutes in ice) and 0.1% Tween-20 in PBS, Blocking: 15% Horse serum, Primary antibody: Rabbit Polyclonal antibody to gamma-H2AX (2 µg per ~10<sup>6</sup> cells) for 30 minutes at room temperature, Secondary antibody: Donkey anti-rabbit PE labeled secondary antibody (1:100 dilution) with incubation for 20 minutes in dark at room temperature. Negative Control: Normal Rabbit IgG (black dashed). Data and results were generated using Orflo Moxiflow<sup>TM</sup> instrument and protocols. B: Western Blot using Rabbit polyclonal antibody to gamma-H2AX (R-1555-100) in treated lymphocytes from human blood. The gamma-H2AX antibody at 1:1,000 in TBST and 3% BSA. Anti-HRP

FOR RESEARCH USE ONLY



**Rabbit polyclonal antibody to gamma-H2AX (phospho S140):  
Affinity purified**

secondary at 1:2,000. Image taken with ImageQuant Las 4000.

biosensis

---

FOR RESEARCH USE ONLY

---

51 West Thebarton Road • Thebarton • South Australia 5031  
Telephone + 61(0)8 8352 7711 • Email [sales@biosensis.com](mailto:sales@biosensis.com) • [www.biosensis.com](http://www.biosensis.com)