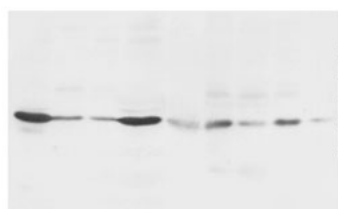


## Rabbit polyclonal antibody to Hematopoietically-expressed homeobox protein HHEX (25-40): Affinity purified

<b>Catalogue No.:</b>	R-1366-100
<b>Description:</b>	HHEX is expressed during hematopoiesis and recognizes the DNA sequence 5'-ATTAA-3'; (Ref: SWISSPROT).
<b>Batch No.:</b>	See product label
<b>Unit size:</b>	100 ug
<b>Antigen:</b>	A synthetic peptide (QPAHPTPFYIEDILGR) corresponding to a region (25-40 aa) from human Hematopoietically-expressed homeobox protein HHEX.
<b>Sequence:</b>	QPAHPTPFYIEDILGR
<b>Antibody Type:</b>	Antiserum
<b>Other Names:</b>	Homeobox protein HEX; Homeobox protein PRH; HHEX; HEX; PRH; PRHX;
<b>Accession:</b>	Q03014 HHEX_HUMAN;
<b>Produced in:</b>	Rabbit
<b>Applications:</b>	Western Blotting (WB). A concentration of 1.0 ug/mL is recommended for WB. Human HHEX has a predicted length of 270 amino acids and MW of 30 kDa. Biosensis recommends optimal dilutions/concentrations should be determined by the end user.
<b>Specificity:</b>	The specificity of this antibody has been confirmed by WB against the antigen.
<b>Antibody Against:</b>	Hematopoietically-expressed homeobox protein HHEX
<b>Cross-reactivity:</b>	Human; rat; predicted to react with mouse due to sequence homology;
<b>Form:</b>	Lyophilised with 5mg BSA, 0.9mg NaCl, 0.2mg Na <sub>2</sub> HPO <sub>4</sub> , 0.05mg Thimerosal, 0.05mg NaN <sub>3</sub>
<b>Appearance:</b>	Lyophilized white powder
<b>Reconstitution:</b>	Reconstitute in 100 uL of sterile distilled water to achieve an antibody concentration of 1 mg/mL. Centrifuge to remove any insoluble material.
<b>Storage:</b>	At least 12 months after purchase at 2-8C (lyophilized formulations). After reconstitution, aliquot and store at -20C for a higher stability. Avoid freeze-thaw cycles.
<b>Expiry Date:</b>	12 months after purchase



Western Blot using Rabbit polyclonal antibody to Hematopoietically-expressed homeobox protein HHEX: Lane 1 : Rat liver tissue lysate Lane 2: Rat Thymus tissue lysate Lane 3: Rat lung tissue lysate Lane 4: Rat pancreas tissue lysate Lane 5: HT1080 Whole cell lysate Lane 6: MM453 Whole cell lysate Lane 7: Smmc Whole cell lysate Lane 8: 6T-CEM Whole cell lysate Lane 9: colo320 Whole cell lysate

FOR RESEARCH USE ONLY