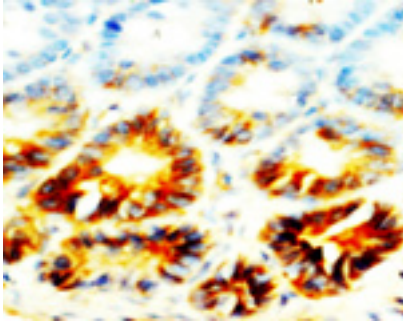


Rabbit polyclonal antibody to human alkaline phosphatase (135-149): Affinity purified

Catalogue No.:	R-1035-100
Description:	Alkaline phosphatase is a hydrolase enzyme responsible for removing phosphate groups from many types of molecules including nucleotides, proteins and alkaloids. There are at least four distinct groups of alkaline phosphatases: intestinal, placental, placental-like and tissue non-specific. The tissue non-specific form is a membrane bound glycosylated protein that is not expressed in any particular tissue.
Batch No.:	See product label
Unit size:	100 ug
Antigen:	A synthetic peptide (ERSRCNTTQGNEVTS) corresponding to the amino acids 135-149 from human alkaline phosphatase. To enhance the immunological response, this peptide was coupled to carrier protein BSA.
Other Names:	Alkaline phosphatase; tissue-nonspecific isozyme; AP-TNAP; TNSALP; ALPL;
Accession:	P05186 PPBT_HUMAN;
Produced in:	Rabbit
Purity:	Affinity purified on antigen column
Applications:	Immunohistochemistry (IHC) and Western Blotting (WB). A concentration of 1.0-2.0 ug/mL is recommended for WB. Human alkaline phosphatase has a predicted length of 524 residues and MW of 57 kDa. A concentration of 1.0-2.0 ug/mL is recommended to detect the protein in formalin fixed and paraffin embedded tissues. Antigen retrieval is required. Biosensis recommends optimal dilutions/concentrations should be determined by the end user.
Specificity:	The specificity of this antibody has been confirmed by WB and IHC against the antigen.
Cross-reactivity:	Human; mouse; rat;
Form:	Lyophilised with 5mg BSA, 0.9mg NaCl, 0.2mg Na ₂ HPO ₄ , 0.05mg Thimerosal, 0.05mg NaN ₃
Reconstitution:	Reconstitute in 100 uL of sterile distilled water to achieve an antibody concentration of 1 mg/mL. Centrifuge to remove any insoluble material.
Storage:	At least 12 months after purchase at 2-8C (lyophilized formulations). After reconstitution, aliquot and store at -20C for a higher stability. Avoid freeze-thaw cycles.
Expiry Date:	12 months after purchase

FOR RESEARCH USE ONLY

Rabbit polyclonal antibody to human alkaline phosphatase (135-149): Affinity purified



Immunohistochemical staining of paraffin-embedded sections of rat small intestine using rabbit polyclonal antibody to human alkaline phosphatase (R-1035-100) at 1-2 µg/ml. Secondary biotinylated goat anti-rabbit IgG antibody at 10 µg/ml.

biosensis

FOR RESEARCH USE ONLY
