

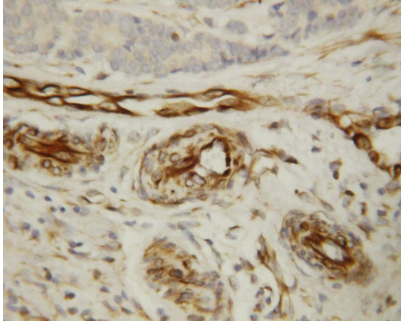
## Rabbit polyclonal antibody to human Angiotensin 1 (278-295): Affinity purified

<b>Catalogue No.:</b>	R-1464-100
<b>Description:</b>	THIS PRODUCT HAS BEEN SUPERCEDED. PLEASE REFER TO THE "REPLACED BY" FIELD BELOW TO LOCATE THE CURRENT BIOSENSIS PRODUCT TO MEET YOUR RESEARCH NEEDS. Angiotensin 1 (ANG-1) is one of the Angiotensin family of growth factors. ANG-1 binds and activates the TIE2 receptor by inducing its tyrosine phosphorylation (Ref: SWISSPROT).
<b>Batch No.:</b>	See product label
<b>Unit size:</b>	100 µg
<b>Antigen:</b>	A synthetic peptide corresponding to a region (278-295 aa) from human Angiotensin 1.
<b>Sequence:</b>	278-295
<b>Other Names:</b>	ANG-1; Angiotensin-1; ANGPT1;
<b>Accession:</b>	Q15389 ANGP1_HUMAN;
<b>Produced in:</b>	Rabbit
<b>Applications:</b>	Western Blotting (WB) and Immunohistochemistry (IHC). A concentration of 1.0 µg/ml is recommended for WB. Human Angiotensin 1 (precursor) has a predicted length of 498 amino acids and MW of 58 kDa. A concentration of 1.0 µg/ml is recommended for IHC to detect the protein in formalin fixed and paraffin embedded tissues. Heat mediated antigen retrieval is required. Biosensis recommends optimal dilutions/concentrations should be determined by the end user.
<b>Specificity:</b>	The specificity of this antibody has been confirmed by WB and IHC against the antigen.
<b>Antibody Against:</b>	Angiotensin 1
<b>Cross-reactivity:</b>	Human;
<b>Form:</b>	Lyophilised with 5mg BSA, 0.9mg NaCl, 0.2mg Na <sub>2</sub> HPO <sub>4</sub> , 0.05mg Thimerosal, 0.05mg Na <sub>3</sub>
<b>Appearance:</b>	White powder
<b>Reconstitution:</b>	Reconstitute in 100 µl of sterile distilled water to achieve an antibody concentration of 1 mg/ml. Centrifuge to remove any insoluble material.
<b>Storage:</b>	At least 12 months after purchase at 2 - 4°C (lyophilized formulations). After reconstitution, aliquot and store at -20°C for a higher stability. Avoid freeze-thaw cycles.
<b>Expiry Date:</b>	12 months after purchase

---

FOR RESEARCH USE ONLY

**Rabbit polyclonal antibody to human Angiopoietin 1 (278-295):  
Affinity purified**



Immunohistochemical staining (paraffin) of human mammary cancer tissue with Rabbit polyclonal antibody to human Angiopoietin 1 (R-1464-100).

biosensis

---

FOR RESEARCH USE ONLY