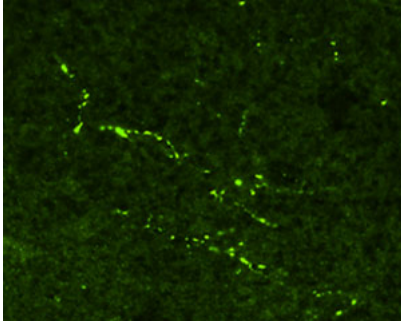


Rabbit polyclonal antibody to human beta Endorphin (1-31)

Catalogue No.:	R-1492-50
Description:	Human beta-endorphin is a 31 amino acid peptide cleaved from the precursor pro-opiomelanocortin (POMC). It is an endogenous opioid peptide neurotransmitter that interacts with opioid receptors.
Batch No.:	See product label
Unit size:	50 ug
Antigen:	Synthetic human beta-endorphin peptide (1-31 aa) conjugated to BSA.
Sequence:	YGGFMTSEKSQTPLVTLFKNAIIKNAYKKGE
Antigen Location:	1-31 aa
Other Names:	-endorphin; Pro-opiomelanocortin; POMC;
Accession:	P01189 COLI_HUMAN;
Produced in:	Rabbit
Applications:	A dilution of 5-10 ug/mL is recommended for immunohistochemistry using formalin fixed and paraffin embedded tissues and for 4% paraformaldehyde fixed frozen tissues. A dilution of 5-15 ug/mL is recommended for immunofluorescence. For radioimmunoassay (RIA), a working dilution of 1:10,000 is recommended. Sensitivity - 120 pg/sample; IC50-1 ng/ sample. Biosensis recommends optimal dilutions/concentrations should be determined by the end user.
Specificity:	Confirmed by RIA against the synthetic peptide.
Species Against:	Human
Antibody Against:	beta Endorphin
Cross-reactivity:	Human; mouse; rat. Beta-endorphin is highly conserved so cross-reactivity with other species is expected. Cross-reactivity with other opioid peptides is as follows: with Met-enkephalin 0.03%; with Leu-enkephalin 0.02%; with beta-lipotropin 0.34%.
Form:	Lyophilised with BSA
Appearance:	White powder
Reconstitution:	Reconstitute in 0.05 mL of PBS (pH 7.4). Centrifuge to remove any insoluble material.
Storage:	At least 12 months after purchase at 2-8C (lyophilized formulations). After reconstitution, aliquot and store at -20C for a higher stability and at 2-8C with an appropriate antibacterial agent. Avoid freeze-thaw cycles
Expiry Date:	12 months after purchase

FOR RESEARCH USE ONLY

Rabbit polyclonal antibody to human beta Endorphin (1-31)



Immunohistochemical staining in rat ventral periaqueductal grey matter (PAG). 4% paraformaldehyde fixed rat brain cryostat sections (10 μ m) were incubated overnight at 4°C with Rabbit polyclonal antibody to human beta Endorphin (10 μ g/ml) followed by incubation with FITC conjugated secondary antibody.

biosensis

FOR RESEARCH USE ONLY