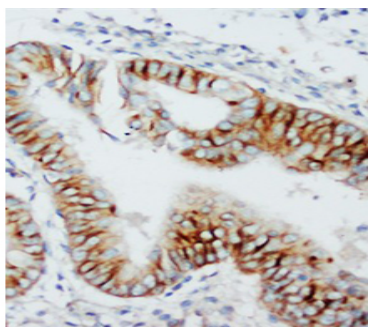


## Rabbit polyclonal antibody to human C-C Chemokine Receptor type 5 (19-34): Affinity purified

<b>Catalogue No.:</b>	R-1043-100
<b>Description:</b>	C-C Chemokine Receptor type 5 (CCR5) is a G-protein coupled receptor for a number of inflammatory CC-chemokines including MIP-1-alpha, MIP-1-beta and RANTES. CCR5 and its ligands may also play important roles in the control of granulocytic lineage proliferation or differentiation as well as pathogenesis of viruses such as HIV.
<b>Batch No.:</b>	See product label
<b>Unit size:</b>	100 ug
<b>Antigen:</b>	A synthetic peptide (PCQKINVKQIAARLLP) corresponding to a region (19-34) from the N-terminus of human C-C Chemokine Receptor type 5. To enhance the immunological response, this peptide was coupled to carrier protein BSA.
<b>Other Names:</b>	C-C CKR-5; CC-CKR-5; CCR-5; CCR5; HIV-1 fusion coreceptor; CHEMR13; CD195;
<b>Accession:</b>	P51681 CCR5_HUMAN;
<b>Produced in:</b>	Rabbit
<b>Purity:</b>	Affinity purified on antigen column
<b>Applications:</b>	Immunohistochemistry (IHC) and Western Blotting (WB). A concentration of 0.1-0.5 ug/mL is recommended for WB. Human CCR5 has a predicted length of 352 residues and MW of 41 kDa. A concentration of 0.5-1 ug/mL is recommended to detect the protein in formalin fixed and paraffin embedded tissues. Heat mediated antigen retrieval is recommended. Biosensis recommends optimal dilutions/concentrations should be determined by the end user.
<b>Specificity:</b>	The specificity of this antibody has been confirmed by WB and IHC against the antigen.
<b>Cross-reactivity:</b>	Human; expected to react with rat and mouse due to sequence homology
<b>Form:</b>	Lyophilised with 5mg BSA, 0.9mg NaCl, 0.2mg Na <sub>2</sub> HPO <sub>4</sub> , 0.05mg Thimerosal, 0.05mg NaN <sub>3</sub>
<b>Reconstitution:</b>	Reconstitute in 100 uL of sterile distilled water to achieve an antibody concentration of 1 mg/mL. Centrifuge to remove any insoluble material.
<b>Storage:</b>	At least 12 months after purchase at 2-8C (lyophilized formulations). After reconstitution, aliquot and store at -20C for a higher stability. Avoid freeze-thaw cycles
<b>Expiry Date:</b>	12 months after purchase



Immunohistochemical staining with Rabbit polyclonal antibody to human C-C Chemokine Receptor type 5 (R-1043-100) at 2 µg/ml in Human Rectal Cancer Tissue. Secondary biotin conjugated goat anti-rabbit IgG antibody at 10 µg/ml.

FOR RESEARCH USE ONLY