

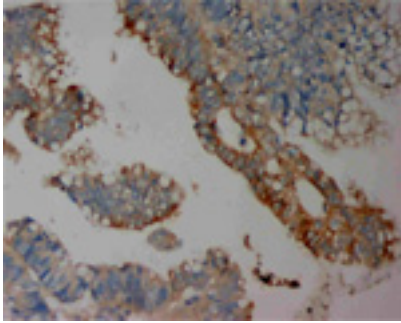
## Rabbit polyclonal antibody to human C-C Chemokine Receptor type 6 (71-87): Affinity purified

<b>Catalogue No.:</b>	R-1110-100
<b>Description:</b>	C-C Chemokine Receptor type 6 (CCR6) is a multi-pass membrane protein and G-protein coupled receptor for chemokines such as MIP-3 alpha. CCR6 is expressed in lymphocytes, T-cells and B-cells.
<b>Batch No.:</b>	See product label
<b>Unit size:</b>	100 ug
<b>Antigen:</b>	A synthetic peptide (FAFYKKARSMTDVYLLN) corresponding to a region (71-87) from human C-C Chemokine Receptor type 6. To enhance the immunological response, this peptide was coupled to carrier protein BSA.
<b>Other Names:</b>	C-C CKR-6; CC-CKR-6; CCR-6; LARC receptor; GPR-CY4; GPRCY4; Chemokine receptor-like 3; CKR-L3; DRY6; G-protein coupled receptor 29; CD196 antigen; CCR6; CKRL3; CMKBR6; GPR29; STRL22;
<b>Accession:</b>	P51684 CCR6_HUMAN;
<b>Produced in:</b>	Rabbit
<b>Purity:</b>	Affinity purified on antigen column
<b>Applications:</b>	Immunohistochemistry (IHC) and Western Blotting (WB). A concentration of 0.75 ug/mL is recommended for WB. Human CCR6 has a predicted length of 374 residues and MW of 43 kDa. A concentration of 0.5-1.0 ug/mL is recommended to detect the protein in formalin fixed and paraffin embedded tissues. Antigen retrieval is required. Biosensis recommends optimal dilutions/concentrations should be determined by the end user.
<b>Specificity:</b>	The specificity of this antibody has been confirmed by WB and IHC against the antigen.
<b>Cross-reactivity:</b>	Human; rat; predicted to react with mouse due to sequence homology
<b>Form:</b>	Lyophilised with 5mg BSA, 0.9mg NaCl, 0.2mg Na <sub>2</sub> HPO <sub>4</sub> , 0.05mg Thimerosal, 0.05mg NaN <sub>3</sub>
<b>Reconstitution:</b>	Reconstitute in 100 uL of sterile distilled water to achieve an antibody concentration of 1 mg/mL. Centrifuge to remove any insoluble material.
<b>Storage:</b>	At least 12 months after purchase at 2-8C (lyophilized formulations). After reconstitution, aliquot and store at -20C for a higher stability. Avoid freeze-thaw cycles
<b>Expiry Date:</b>	12 months after purchase

---

FOR RESEARCH USE ONLY

## **Rabbit polyclonal antibody to human C-C Chemokine Receptor type 6 (71-87): Affinity purified**



Immunohistochemical staining of paraffin-embedded human large intestine cancer sections using rabbit polyclonal antibody to human C-C Chemokine Receptor type 6 (0.5-1  $\mu$ g/ml). Secondary biotinylated goat anti-rabbit IgG antibody (10  $\mu$ g/ml).

biosensis

---

FOR RESEARCH USE ONLY