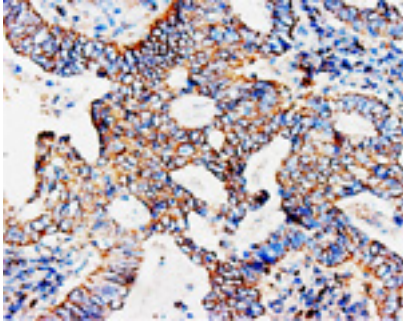


Rabbit polyclonal antibody to human C-C Chemokine Receptor type 7 (341-357): Affinity purified

Catalogue No.:	R-1044-100
Description:	THIS PRODUCT IS TEMPORARILY OUT OF STOCK. PLEASE REFER TO THE "REPLACED BY" FIELD BELOW TO LOCATE THE CURRENT BIOSENSIS PRODUCT TO MEET YOUR RESEARCH NEEDS. C-C Chemokine Receptor type 7 (CCR-7) is a G-protein coupled receptor for the MIP-3-beta chemokine. CCR-7 expression has been found in various lymphoid tissues and activated B- and T-lymphocytes. CCR-7 is highly expressed in B-cells infected with Epstein-Barr virus (EBV) and T-cells infected with herpes virus 6 or 7.
Batch No.:	See product label
Unit size:	100 ug
Antigen:	A synthetic peptide (FKDLGCLSQEQLRQWSS) corresponding to a region (341-357) from the C-terminus of human C-C Chemokine Receptor type 7. To enhance the immunological response, this peptide was coupled to carrier protein BSA.
Other Names:	C-C chemokine receptor type 7; C-C CKR-7; CC-CKR-7; CCR-7; MIP-3 beta receptor; EBV-induced G-protein coupled receptor 1; EB11; BLR2; CDw197; CD197;
Accession:	P32248 CCR7_HUMAN;
Produced in:	Rabbit
Purity:	Affinity purified on antigen column
Applications:	Immunohistochemistry (IHC) and Western Blotting (WB). A concentration of 1.0-2.0 ug/mL is recommended for WB. Human CCR-7 (precursor) has a predicted length of 378 residues and MW of 43 kDa. A concentration of 1.0-2.0 ug/mL is recommended to detect the protein in formalin fixed and paraffin embedded tissues. Antigen retrieval is required. Biosensis recommends optimal dilutions/concentrations should be determined by the end user.
Specificity:	The specificity of this antibody has been confirmed by WB and IHC against the antigen.
Cross-reactivity:	Human; mouse; rat;
Form:	Lyophilised with 5mg BSA, 0.9mg NaCl, 0.2mg Na ₂ HPO ₄ , 0.05mg Thimerosal, 0.05mg Na ₃
Reconstitution:	Reconstitute in 100 uL of sterile distilled water to achieve an antibody concentration of 1 mg/mL. Centrifuge to remove any insoluble material.
Storage:	At least 12 months after purchase at 2-8C (lyophilized formulations). After reconstitution, aliquot and store at -20C for a higher stability. Avoid freeze-thaw cycles
Expiry Date:	12 months after purchase

FOR RESEARCH USE ONLY

Rabbit polyclonal antibody to human C-C Chemokine Receptor type 7 (341-357): Affinity purified



Immunohistochemical staining with rabbit polyclonal antibody to human C-C Chemokine Receptor type 7 of paraffin-embedded human rectal cancer sections at 1-2 μ g/ml. Secondary biotinylated goat anti-rabbit IgG antibody (10 μ g/ml).

biosensis

FOR RESEARCH USE ONLY