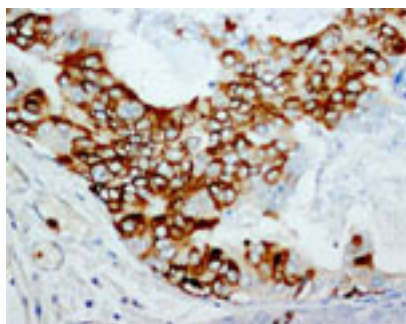


## Rabbit polyclonal antibody to human Caspase 2 (417-439): Affinity purified

<b>Catalogue No.:</b>	R-1026-100
<b>Description:</b>	Caspase 2 is a member of the cysteine-aspartic acid protease (caspase) family and acts as both a positive and negative regulator of apoptosis. Overexpression of the full length Caspase 2 (Isoform ICH-1L) in some cell types results in apoptosis whereas the overexpression of an alternative Caspase 2 (ICH-1S) splice variant suppresses apoptosis.
<b>Batch No.:</b>	See product label
<b>Unit size:</b>	100 ug
<b>Antigen:</b>	A synthetic peptide (REGYAPGTEFHRCKEMSEYCSSTL) corresponding to a region (417-439) from human Caspase 2
<b>Other Names:</b>	CASP-2; ICH-1 protease; CASP2; ICH1; NEDD2;
<b>Accession:</b>	P42575 CASP2_HUMAN;
<b>Produced in:</b>	Rabbit
<b>Purity:</b>	Affinity purified on antigen column
<b>Applications:</b>	Immunohistochemistry (IHC) and Western Blotting (WB). A concentration of 0.5-1.0 ug/mL is recommended for WB. Human Caspase 2 (Isoform ICH-1L) has a predicted length of 452 amino acids and a MW of 51 kDa. A concentration of 1.0-2.0 ug/mL is recommended to detect the protein in formalin fixed and paraffin embedded tissues. Antigen retrieval is required. Biosensis recommends optimal dilutions/concentrations should be determined by the end user.
<b>Specificity:</b>	The specificity of this antibody has been confirmed by WB and IHC against the antigen.
<b>Cross-reactivity:</b>	Human; rat; mouse;
<b>Form:</b>	Lyophilised with 5mg BSA, 0.9mg NaCl, 0.2mg Na <sub>2</sub> HPO <sub>4</sub> , 0.05mg Thimerosal, 0.05mg NaN <sub>3</sub>
<b>Reconstitution:</b>	Reconstitute in 100 uL of sterile distilled water to achieve an antibody concentration of 1 mg/mL. Centrifuge to remove any insoluble material.
<b>Storage:</b>	At least 12 months after purchase at 2-8C (lyophilized formulations). After reconstitution, aliquot and store at -20C for a higher stability. Avoid freeze-thaw cycles
<b>Expiry Date:</b>	12 months after purchase



Immunohistochemical staining of paraffin-embedded human mammary cancer sections using Caspase 2 antibody (R-1026-100) at a concentration of 1.0-2.0 µg/ml. Secondary detection with Biotinylated goat anti-rabbit IgG (10 µg/ml).

---

FOR RESEARCH USE ONLY