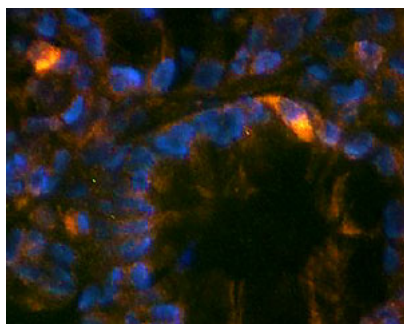


Rabbit polyclonal antibody to human Gastrin (76-85)

Catalogue No.:	R-1497-50
Description:	Human Gastrin is a 101 amino acid hormone produced by G cells of the duodenum, stomach and pancreas. It stimulates secretion of hydrochloric acid by parietal cells of the stomach. Gastrin is also secreted into bloodstream.
Batch No.:	See product label
Unit size:	50 ug
Antigen:	Synthetic human Gastrin peptide (76-85 aa) conjugated to BSA.
Sequence:	QGPWLEEEEE
Antigen Location:	76-85
Other Names:	GAST; GAS; G14; G17; G34; G52; G6; GAST_HUMAN; Gastrin component I; Gastrin component II; Gastrin component III; Gastrin precursor; Gastrin-17; Gastrin-34; Gastrin-6;
Accession:	P01350 GAST;
Produced in:	Rabbit
Applications:	A dilution of 5-10 ug/mL is recommended for immunohistochemistry using formalin fixed and paraffin embedded tissues and for 4% paraformaldehyde fixed frozen tissues. A dilution of 5-15 ug/mL is recommended for immunofluorescence. Biosensis recommends optimal dilutions/concentrations should be determined by the end user.
Species Against:	Human
Antibody Against:	Gastrin
Cross-reactivity:	Human, mouse, rat
Form:	Lyophilised with BSA
Appearance:	White powder
Reconstitution:	Reconstitute in 0.05 mL of PBS (pH 7.4). Centrifuge to remove any insoluble material.
Storage:	At least 12 months after purchase at 2-8C (lyophilized formulations). After reconstitution, aliquot and store at -20C for a higher stability and at 2-8C with an appropriate antibacterial agent. Avoid freeze-thaw cycles
Expiry Date:	12 months after purchase



Immunohistochemical staining in G cells of rat gastric glands. 4% paraformaldehyde fixed rat stomach cryostat sections (10 μ m) were incubated overnight at 4°C with Rabbit polyclonal antibody to human Gastrin (10 μ g/ml) followed by incubation with donkey anti-rabbit Rhodamine Red conjugated secondary antibody (1:200). Cell nuclei were counterstained with DAPI.

FOR RESEARCH USE ONLY