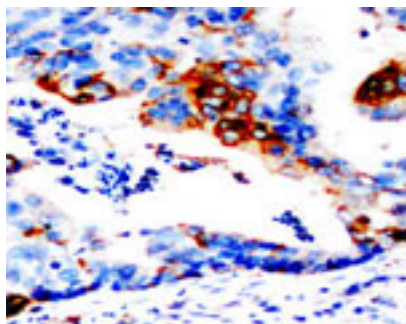


Rabbit polyclonal antibody to human glutathione S-transferase pi (197-210): Affinity purified

Catalogue No.:	R-1060-100
Description:	Glutathione S transferases (GSTs) are a large family of enzymes which catalyse the conjugation of reduced glutathione to electrophilic substrates. Glutathione S-transferase pi is one of four major types of mammalian GSTs.
Batch No.:	See product label
Unit size:	100 ug
Antigen:	A synthetic peptide corresponding to a region (197-210) from the C-terminus of human glutathione S-transferase pi. To enhance the immunological response, this peptide was coupled to carrier protein BSA.
Antigen Location:	197-210
Other Names:	GSTP1; FAEES3; GST3; GST class-pi; GSTP1-1;
Accession:	P09211 GSTP1_HUMAN;
Produced in:	Rabbit
Purity:	Affinity purified on antigen column
Applications:	Western Blotting (WB). A concentration of 0.1-0.5ug/mL is recommended for WB. Human glutathione S-transferase pi has a predicted length of 210 residues and MW of 23 kDa. Biosensis recommends optimal dilutions/concentrations should be determined by the end user.
Specificity:	The specificity of this antibody has been confirmed by WB (Human, mouse) against the antigen.
Cross-reactivity:	Human; mouse;
Form:	Lyophilised with 5mg BSA, 0.9mg NaCl, 0.2mg Na ₂ HPO ₄ , 0.05mg Thimerosal, 0.05mg NaN ₃
Reconstitution:	Reconstitute in 100 uL of sterile distilled water to achieve an antibody concentration of 1 mg/mL. Centrifuge to remove any insoluble material.
Storage:	After reconstitution, aliquot and store at -20C for a higher stability. Avoid freeze-thaw cycles
Expiry Date:	12 months after purchase



Immunohistochemical staining of paraffin-embedded human endometrial carcinoma sections using glutathione S-transferase pi antibody (R-1060-100) at a concentration of 1.0 µg/ml. Secondary detection with Biotinylated goat anti-rabbit IgG (10 µg/ml).

FOR RESEARCH USE ONLY