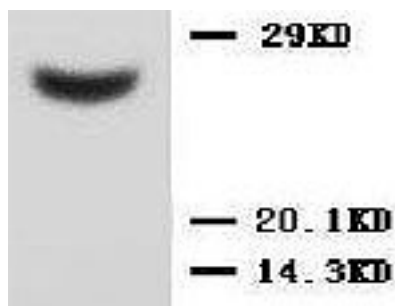


Rabbit polyclonal antibody to human Metalloproteinase inhibitor 2 (205-220): Affinity purified

Catalogue No.:	R-1105-100
Description:	The matrix metalloproteinases (MMPs) are a large family of zinc endopeptidases that degrade extracellular matrix components such as fibronectin and collagen type III. The tissue inhibitors of metalloproteinase (TIMPs) complex with these matrix metalloproteinases and irreversibly inactivate them. The TIMP proteins are homologous and are either secreted in soluble form (TIMP1, TIMP2 and TIMP4) or bind to extracellular matrix components (TIMP3). Metalloproteinase inhibitor 2 (TIMP2) is known to inhibit MMP-1, MMP-2, MMP-3, MMP-7, MMP-8, MMP-9, MMP-10, MMP-13, MMP-14, MMP-15, MMP-16 and MMP-19.
Batch No.:	See product label
Unit size:	100 ug
Antigen:	A synthetic peptide (RGAAPPKQEFLDIEDP) corresponding to a region (205-220) from the C-terminus of human Metalloproteinase inhibitor 2. To enhance the immunological response, this peptide was coupled to carrier protein BSA.
Other Names:	Tissue inhibitor of metalloproteinases 2; TIMP-2; CSC-21K; TIMP2;
Accession:	P16035 TIMP2_HUMAN;
Produced in:	Rabbit
Purity:	Affinity purified on antigen column
Applications:	Western Blotting (WB). A concentration of 1.0-2.0 ug/mL is recommended for WB. Human TIMP2 (precursor) has a predicted length of 220 residues and MW of 24 kDa. Biosensis recommends optimal dilutions/concentrations should be determined by the end user.
Specificity:	The specificity of this antibody has been confirmed by WB against the antigen.
Cross-reactivity:	Human; mouse; rat; rabbit;
Form:	Liquid (0.5ml). 50% glycerol, 0.9mg NaCl and 0.2mg Na ₂ HPO ₄
Reconstitution:	The liquid formulation should be diluted in PBS (pH 7.4)
Storage:	After reconstitution, aliquot and store at -20C for a higher stability. Avoid freeze-thaw cycles.
Expiry Date:	12 months after purchase



Western blot of Metalloproteinase inhibitor 2 antibody R-1105-100 at 1-2 μ g/ml in rat kidney tissue lysate. Secondary antibody HRP conjugated goat anti-rabbit IgG at 1:3000 dilution.

FOR RESEARCH USE ONLY