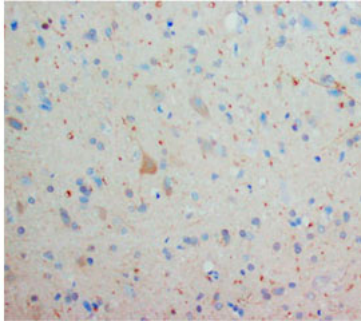


Rabbit polyclonal antibody to human Orexin receptor type 1 (327-342): Affinity purified

Catalogue No.:	R-1030-100
Description:	THIS PRODUCT HAS BEEN SUPERCEDED. PLEASE REFER TO THE "REPLACED BY" FIELD BELOW TO LOCATE THE CURRENT BIOSENSIS PRODUCT TO MEET YOUR RESEARCH NEEDS. Orexin receptor type 1 is a moderately selective excitatory receptor for orexin-A neuropeptide. It has a lower affinity for orexin-B neuropeptide. It is a multi-pass membrane protein and belongs to the G-protein coupled receptor 1 family.
Batch No.:	See product label
Unit size:	100 ug
Antigen:	A synthetic peptide (FRQASDREAVYACFTF) corresponding to a region (327-342) from human Orexin Receptor type 1. To enhance the immunological response, this peptide was coupled to carrier protein BSA.
Other Names:	Ox1r; Hypocretin receptor type 1; HCRTR1; OX1R;
Accession:	O43613 OX1R_HUMAN;
Produced in:	Rabbit
Purity:	Affinity purified on antigen column
Applications:	Immunohistochemistry (IHC) and Western Blotting (WB). A concentration of 0.1-0.5 ug/mL is recommended for WB. Human Orexin receptor type 1 has a predicted length of 425 residues and MW of 48 kDa. A concentration of 0.5-1.0 ug/mL is recommended to detect the protein in formalin fixed and paraffin embedded tissues. Heat mediated antigen retrieval is recommended. Biosensis recommends optimal dilutions/concentrations should be determined by the end user.
Specificity:	Specificity has been confirmed by WB and IHC against the antigen.
Cross-reactivity:	Human (WB), Rat (IHC, WB), Predicted to react with mouse due to sequence homology;
Form:	Lyophilised with 5mg BSA, 0.9mg NaCl, 0.2mg Na ₂ HPO ₄ , 0.05mg Thimerosal, 0.05mg Na ₃
Reconstitution:	Reconstitute in 100 uL of sterile distilled water to achieve an antibody concentration of 1 mg/mL. Centrifuge to remove any insoluble material.
Storage:	At least 12 months after purchase at 2-8C (lyophilized formulations). After reconstitution, aliquot and store at -20C for a higher stability. Avoid freeze-thaw cycles
Expiry Date:	12 months after purchase

FOR RESEARCH USE ONLY

Rabbit polyclonal antibody to human Orexin receptor type 1 (327-342): Affinity purified



Immunohistochemical staining with Rabbit polyclonal antibody to human Orexin receptor type 1 (327-342) at 2 µg/ml in Rat Brain Tissue. Secondary biotin conjugated goat anti-rabbit IgG antibody at 10 µg/ml.

biosensis

FOR RESEARCH USE ONLY