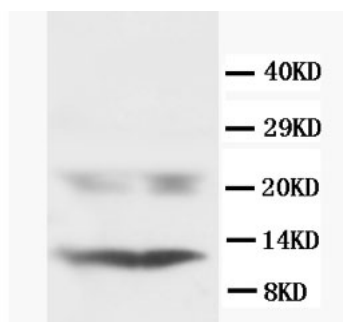


Rabbit polyclonal antibody to Human Phospholamban (2-16): Affinity purified

Catalogue No.:	R-1351-100
Description:	Phospholamban regulates the activity of the calcium pump of cardiac sarcoplasmic reticulum (Ref: SWISSPROT).
Batch No.:	See product label
Unit size:	100 ug
Antigen:	A synthetic peptide (EKVQYLTRSAIRRAS) corresponding to a region (2-16 aa) from the N-terminus of human Phospholamban.
Sequence:	EKVQYLTRSAIRRAS
Antibody Type:	Antiserum
Other Names:	Cardiac phospholamban; PLB; PLN; PLB;
Accession:	P26678 PPLA_RAT; P61016 PPLA_RAT;
Produced in:	Rabbit
Applications:	Western Blotting (WB). A concentration of 1.0 ug/mL is recommended for WB. Rat Phospholamban has a predicted length of 52 amino acids and MW of 6 kDa. Biosensis recommends optimal dilutions/concentrations should be determined by the end user.
Specificity:	The specificity of this antibody has been confirmed by WB against the antigen.
Antibody Against:	Phospholamban
Cross-reactivity:	Rat; predicted to react with human and mouse due to sequence homology;
Form:	Lyophilised with 5mg BSA, 0.9mg NaCl, 0.2mg Na ₂ HPO ₄ , 0.05mg Thimerosal, 0.05mg NaN ₃
Appearance:	Lyophilized white powder
Reconstitution:	Reconstitute in 100 uL of sterile distilled water to achieve an antibody concentration of 1 mg/mL. Centrifuge to remove any insoluble material.
Storage:	At least 12 months after purchase at 2-8C (lyophilized formulations). After reconstitution, aliquot and store at -20C for a higher stability. Avoid freeze-thaw cycles.
Expiry Date:	12 months after purchase



Western Blot using Rabbit polyclonal antibody to Phospholamban: Lanes 1 and 2 contain rat heart tissue lysate.

FOR RESEARCH USE ONLY