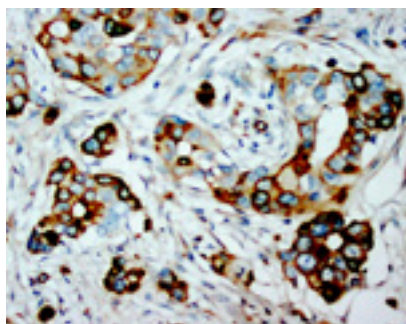


Rabbit polyclonal antibody to human S-phase kinase-associated protein 2 (2-20): Affinity purified

Catalogue No.:	R-1102-100
Description:	S-phase kinase-associated protein 2 (SKP2) is a subunit in the SKP1-CUL1-F-box protein E3 ubiquitin protein ligase complex. This complex mediates the ubiquitination and the subsequent degradation of proteins involved in cell cycle progression, signal transduction and transcription.
Batch No.:	See product label
Unit size:	100 ug
Antigen:	A synthetic peptide (HRKHLQEIPDLSSNVATSF) corresponding to a region (2-20) from the N-terminus of human S-phase kinase-associated protein 2. To enhance the immunological response, this peptide was coupled to carrier protein BSA.
Other Names:	F-box protein Skp2; Cyclin A/CDK2-associated protein p45; p45skp2; F-box/LRR-repeat protein 1; SKP2; FBXL1;
Accession:	Q13309 SKP2_HUMAN;
Produced in:	Rabbit
Purity:	Affinity purified on antigen column
Applications:	Immunohistochemistry (IHC) and Western Blotting (WB). A concentration of 1.0 ug/mL is recommended for WB. Human SKP2 (Isoform SKP2_alpha) has a predicted length of 424 residues and MW of 48 kDa. A concentration of 1.0-2.0 ug/mL is recommended to detect the protein in formalin fixed and paraffin embedded tissues. Biosensis recommends optimal dilutions/concentrations should be determined by the end user.
Specificity:	The specificity of this antibody has been confirmed by WB and IHC against the antigen.
Cross-reactivity:	Human; mouse; rat;
Form:	Lyophilised with 5mg BSA, 0.9mg NaCl, 0.2mg Na2HPO4, 0.05mg Thimerosal, 0.05mg NaN3
Reconstitution:	Reconstitute in 100 uL of sterile distilled water to achieve an antibody concentration of 1 mg/mL. Centrifuge to remove any insoluble material.
Storage:	At least 12 months after purchase at 2-8C (lyophilized formulations). After reconstitution, aliquot and store at -20C for a higher stability. Avoid freeze-thaw cycles
Expiry Date:	12 months after purchase



Immunohistochemical staining of paraffin-embedded human mammary cancer sections using rabbit polyclonal antibody to human S-phase kinase-associated protein 2 (1-2 μg/ml). Secondary biotinylated goat anti-rabbit IgG antibody (10 μg/ml).

FOR RESEARCH USE ONLY