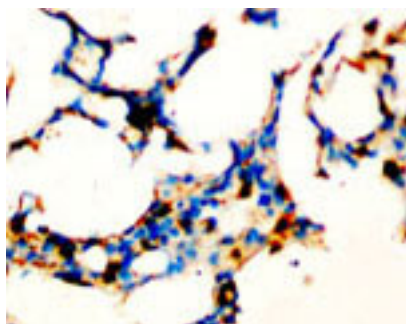


Rabbit polyclonal antibody to human SOCS1 (197-211): Affinity purified

Catalogue No.:	R-1029-100
Description:	The SOCS (Suppressor of cytokine signaling) family of proteins has at least 8 members; SOCS1 to SOCS7 and CIS (cytokine inducible SH2 containing protein). SOCS1 has a role in the negative regulation of cytokines that signal through the JAK/STAT3 pathway.
Batch No.:	See product label
Unit size:	100 ug
Antigen:	A synthetic peptide (NPVLRDYLSFPFQI) corresponding to a region (197-211) from the C-terminus of human SOCS1.
Other Names:	Janus kinase binding protein; STAT induced STAT inhibitor 1; SOCS-1; JAK-binding protein; JAB; SSI-1; TIP-3; Tec-interacting protein 3; SSI1; TIP3;
Accession:	O15524 SOCS1_HUMAN;
Produced in:	Rabbit
Purity:	Affinity purified on antigen column
Applications:	Immunohistochemistry (IHC) and Western Blotting (WB). A concentration of 0.1-0.5 ug/mL is recommended for WB. Human SOCS1 has a predicted length of 211 residues and MW of 24 kDa. A concentration of 0.5-1.0 ug/mL is recommended to detect SOCS1 in formalin fixed and paraffin embedded tissues. Heat mediated antigen retrieval is required. Biosensis recommends optimal dilutions/concentrations should be determined by the end user.
Specificity:	The specificity of this antibody has been confirmed by WB and IHC against the antigen.
Cross-reactivity:	Human; rat; predicted to react with mouse due to sequence homology;
Form:	Lyophilised with 5mg BSA, 0.9mg NaCl, 0.2mg Na ₂ HPO ₄ , 0.05mg Thimerosal, 0.05mg NaN ₃
Reconstitution:	Reconstitute in 100 uL of sterile distilled water to achieve an antibody concentration of 1 mg/mL. Centrifuge to remove any insoluble material.
Storage:	At least 12 months after purchase at 2-8C (lyophilized formulations). After reconstitution, aliquot and store at -20C for a higher stability. Avoid freeze-thaw cycles.
Expiry Date:	12 months after purchase



Immunohistochemical staining of paraffin-embedded rat lung tissue sections using SOCS1 antibody (R-1029-100) at a concentration of 0.5-1.0 µg/ml. Secondary detection with Biotinylated goat anti-rabbit IgG (10 µg/ml).

FOR RESEARCH USE ONLY