

## Rabbit polyclonal antibody to human Somatostatin (1-14): Affinity purified

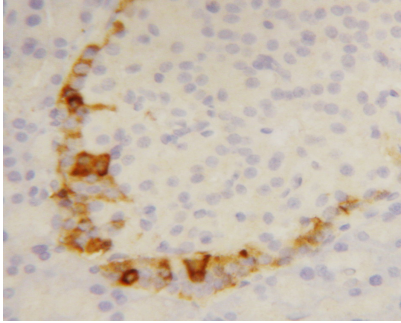
<b>Catalogue No.:</b>	R-1481-100
<b>Description:</b>	THIS PRODUCT HAS BEEN SUPERCEDED. PLEASE REFER TO THE "REPLACED BY" FIELD BELOW TO LOCATE THE CURRENT BIOSENSIS PRODUCT TO MEET YOUR RESEARCH NEEDS. The active forms of Somatostatin are produced by alternate cleavage of the single preproprotein encoded by the Somatostatin gene. This protein is ubiquitously expressed and inhibits the release of many secondary hormones by binding to high-affinity G-protein-coupled Somatostatin receptors.
<b>Replaced by:</b>	R-1502-50
<b>Batch No.:</b>	See product label
<b>Unit size:</b>	100 µg
<b>Antigen:</b>	A synthetic peptide corresponding to a region (1-14 aa) from the N-terminus of human Somatostatin.
<b>Antigen Location:</b>	1-14 aa
<b>Other Names:</b>	Growth hormone release-inhibiting factor; Somatostatin-282; Somatostatin-14; SST;
<b>Accession:</b>	P61278 SMS_HUMAN;
<b>Produced in:</b>	Rabbit
<b>Applications:</b>	Western Blotting (WB) and Immunohistochemistry (IHC). A concentration of 1.0 µg/ml is recommended for WB. Human Somatostatin (precursor) has a predicted length of 116 amino acids and MW of 13 kDa. A concentration of 1.0 µg/ml is recommended for IHC to detect the protein in formalin fixed and paraffin embedded tissues. Heat mediated antigen retrieval is required. A concentration of 1.0 µg/ml is also recommended for IHC in frozen tissue. Biosensis recommends optimal dilutions/concentrations should be determined by the end user.
<b>Specificity:</b>	The specificity of this antibody has been confirmed by WB and IHC against the antigen.
<b>Antibody Against:</b>	Somatostatin
<b>Cross-reactivity:</b>	Human (WB, IHC); rat (IHC); mouse (IHC);
<b>Form:</b>	Lyophilised with 5mg BSA, 0.9mg NaCl, 0.2mg Na <sub>2</sub> HPO <sub>4</sub> , 0.05mg Thimerosal, 0.05mg Na <sub>3</sub>
<b>Appearance:</b>	White powder
<b>Reconstitution:</b>	Reconstitute in 100 µl of sterile distilled water to achieve an antibody concentration of 1 mg/ml. Centrifuge to remove any insoluble material.
<b>Storage:</b>	At least 12 months after purchase at 2 - 4°C (lyophilized formulations). After reconstitution, aliquot and store at -20°C for a higher stability. Avoid freeze-thaw cycles.
<b>Expiry Date:</b>	12 months after purchase

---

FOR RESEARCH USE ONLY

---

## **Rabbit polyclonal antibody to human Somatostatin (1-14): Affinity purified**



Immunohistochemical staining of (frozen) rat pancreas with Rabbit polyclonal antibody to human Somatostatin.

biosensis

---

FOR RESEARCH USE ONLY