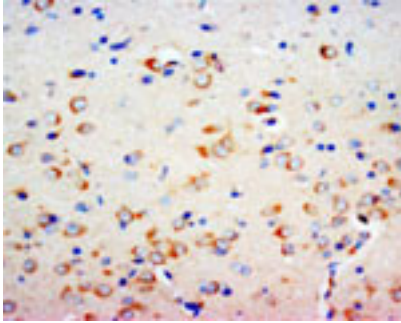


Rabbit polyclonal antibody to human Sonic Hedgehog protein (34-50): Affinity purified

Catalogue No.:	R-1082-100
Description:	Sonic Hedgehog protein (SHH) is essential for a variety of patterning events during embryo development. SHH is expressed in fetal intestine, liver, lung, and kidney. The SHH precursor protein is autocatalytically cleaved into two products. The C-terminal portion is involved in the proteolysis of the precursor and cholesterol transferase activity. The N-terminal portion contains signalling activity.
Batch No.:	See product label
Unit size:	100 ug
Antigen:	A synthetic peptide (RHPKKLTPLAYKQFIPN) corresponding to a region (34-50) from human Sonic Hedgehog protein (SHH). To enhance the immunological response, this peptide was coupled to carrier protein BSA.
Other Names:	SHH; HHG-1;
Accession:	Q15465 SHH_HUMAN;
Produced in:	Rabbit
Purity:	Affinity purified on antigen column
Applications:	Immunohistochemistry (IHC) and Western Blotting (WB). A concentration of 1.0-2.0 ug/mL is recommended for WB. Human Sonic Hedgehog protein (precursor) has a predicted length of 462 amino acids and MW of 50 kDa. A concentration of 1.0-2.0 ug/mL is recommended to detect the protein in formalin fixed and paraffin embedded tissues. Biosensis recommends optimal dilutions/concentrations should be determined by the end user.
Specificity:	The specificity of this antibody has been confirmed by WB and IHC against the antigen.
Cross-reactivity:	Human; mouse; rat; rabbit;
Form:	Lyophilised with 5mg BSA, 0.9mg NaCl, 0.2mg Na ₂ HPO ₄ , 0.05mg Thimerosal, 0.05mg NaN ₃
Reconstitution:	Reconstitute in 100 uL of sterile distilled water to achieve an antibody concentration of 1 mg/mL. Centrifuge to remove any insoluble material.
Storage:	At least 12 months after purchase at 2-8C (lyophilized formulations). After reconstitution, aliquot and store at -20C for a higher stability. Avoid freeze-thaw cycles
Expiry Date:	12 months after purchase

FOR RESEARCH USE ONLY

Rabbit polyclonal antibody to human Sonic Hedgehog protein (34-50): Affinity purified



Immunohistochemical detection of SHH in paraffin-embedded rat brain tissue sections using Rabbit polyclonal antibody to Sonic Hedgehog protein (R-1082-100) at 1.0-2.0 µg/ml. Secondary antibody was biotinylated goat anti-rabbit at a concentration of 10.0 µg/ml.

biosensis

FOR RESEARCH USE ONLY