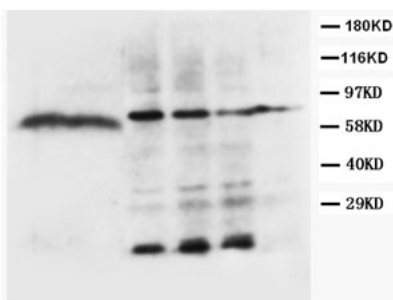


Rabbit polyclonal antibody to Lipoprotein lipase (448-470): Affinity purified

Catalogue No.:	R-1346-100
Description:	LDL is secreted by macrophages and acts in the hydrolysis of triglycerides of circulating chylomicrons and very low density lipoproteins (Ref: SWISSPROT).
Batch No.:	See product label
Unit size:	100 ug
Antigen:	A synthetic peptide (EKVSHLQKGKAPAVFVKCHDKSL) corresponding to a region (448-470 aa) from the C-terminus of human Lipoprotein lipase (LPL).
Sequence:	EKVSHLQKGKAPAVFVKCHDKSL
Antibody Type:	Antiserum
Other Names:	LPL; LIPD;
Accession:	P06858 LIPL_HUMAN;
Produced in:	Rabbit
Applications:	Western Blotting (WB). A concentration of 1.0 ug/mL is recommended for WB. Human LPL (precursor) has a predicted length of 475 amino acids and MW of 53 kDa. Biosensis recommends optimal dilutions/concentrations should be determined by the end user.
Specificity:	The specificity of this antibody has been confirmed by WB against the antigen.
Antibody Against:	Lipoprotein lipase
Cross-reactivity:	Human; Bovine;
Form:	Lyophilised with 5mg BSA, 0.9mg NaCl, 0.2mg Na ₂ HPO ₄ , 0.05mg Thimerosal, 0.05mg NaN ₃
Appearance:	Lyophilized white powder
Reconstitution:	Reconstitute in 100 uL of sterile distilled water to achieve an antibody concentration of 1 mg/mL. Centrifuge to remove any insoluble material.
Storage:	At least 12 months after purchase at 2-8C (lyophilized formulations). After reconstitution, aliquot and store at -20C for a higher stability. Avoid freeze-thaw cycles
Expiry Date:	12 months after purchase



Western Blot using Rabbit polyclonal antibody to Lipoprotein lipase:
Lanes 1 and 2: Milk Lane 3: MCF-7 Whole cell lysate Lane 4: HeLa
Whole cell lysate Lane 5: Jurkat Whole cell lysate Lane 6: Smmc Whole
cell lysate

FOR RESEARCH USE ONLY