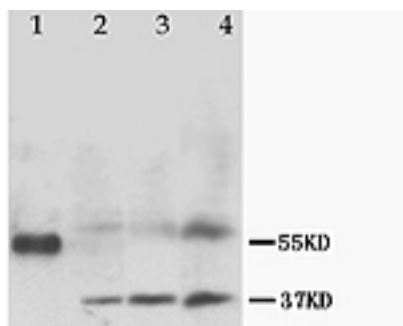


## Rabbit polyclonal antibody to Mas-related G-protein coupled receptor member X1 (14-28): Affinity purified

<b>Catalogue No.:</b>	R-1126-100
<b>Description:</b>	Mas-related G-protein coupled receptor member X1 (MRGPRX1) is an opioid receptor that is uniquely localized in a subset of small dorsal root and trigeminal sensory neurons. MRGPRX1 is thought to be involved in the regulation of sensory neurons.
<b>Batch No.:</b>	See product label
<b>Unit size:</b>	100 ug
<b>Antigen:</b>	A synthetic peptide (TLNKTGHPSCRPILT) corresponding to a region (14-28) from rat Mas-related G-protein coupled receptor member X1. To enhance the immunological response, this peptide was coupled to carrier protein BSA.
<b>Other Names:</b>	Sensory neuron-specific G-protein coupled receptor 1; Mrgprx1; Mrgc; Mrgprc; Mrgprc11; Snsr; Snsr1;
<b>Accession:</b>	Q8R4G1 MRGX1_RAT;
<b>Produced in:</b>	Rabbit
<b>Purity:</b>	Affinity purified on antigen column
<b>Applications:</b>	Immunohistochemistry (IHC) and Western Blotting (WB). A concentration of 0.1-0.5 ug/mL is recommended for WB. Rat MRGPRX1 has a predicted length of 323 residues and MW of 37 kDa. A concentration of 0.5-1.0 ug/mL is recommended to detect the protein in formalin fixed and paraffin embedded tissues. Heat mediated antigen retrieval is required. Biosensis recommends optimal dilutions/concentrations should be determined by the end user.
<b>Specificity:</b>	The specificity of this antibody has been confirmed by WB and IHC against the antigen.
<b>Cross-reactivity:</b>	Rat;
<b>Form:</b>	Lyophilised with 5mg BSA, 0.9mg NaCl, 0.2mg Na <sub>2</sub> HPO <sub>4</sub> , 0.05mg Thimerosal, 0.05mg NaN <sub>3</sub>
<b>Reconstitution:</b>	Reconstitute in 100 uL of sterile distilled water to achieve an antibody concentration of 1 mg/mL. Centrifuge to remove any insoluble material.
<b>Storage:</b>	At least 12 months after purchase at 2-8C (lyophilized formulations). After reconstitution, aliquot and store at -20C for a higher stability. Avoid freeze-thaw cycles
<b>Expiry Date:</b>	12 months after purchase



Western blot analysis of rabbit polyclonal antibody to Mas-related G-protein coupled receptor member X1 (0.75µg/ml):

Lane 1: Lane marker  
 Lane 2: Rat heart tissue lysate  
 Lane 3: Rat skeletal muscle tissue lysate  
 Lane 4: MCG7 whole cell lysate

Secondary HRP conjugated goat anti-rabbit IgG antibody (working dilution: 1:3000-10000).

FOR RESEARCH USE ONLY



**Rabbit polyclonal antibody to Mas-related G-protein coupled receptor member X1 (14-28): Affinity purified**

biosensis

---

FOR RESEARCH USE ONLY

---

51 West Thebarton Road • Thebarton • South Australia 5031  
Telephone + 61(0)8 8352 7711 • Email [sales@biosensis.com](mailto:sales@biosensis.com) • [www.biosensis.com](http://www.biosensis.com)