

Rabbit polyclonal antibody to Neurofilament Heavy, phosphorylated and non-phosphorylated: Whole serum

Catalogue No.:	R-1389-50
Description:	Neurofilaments contain three intermediate filament proteins: light (68 kDa), medium (160 kDa) and heavy (200 kDa). Neurofilament heavy (NF200 or NF-H) is phosphorylated and it is thought that this results in the formation of interfilament cross bridges that are important in the maintenance of axonal caliber.
Batch No.:	See product label
Unit size:	50 uL
Antigen:	Purified rat NF-H construct containing most of the tandem KSP repeats expressed and purified from E.coli.
Antibody Type:	Antiserum
Other Names:	NF-200; NF200; NF-H; NEFH; N52; Neurofilament heavy polypeptide; Neurofilament triplet H protein; 200 kDa neurofilament protein; KIAA0845; NFH;
Accession:	P12036 NFH_HUMAN;
Produced in:	Rabbit
Applications:	Western Blotting (WB) and Immunocytochemistry (ICC). Suggested dilution for WB of 1:5,000-10,000. Suggested dilution for IC is 1:500-1,000. This antibody stains dendritic and perikaryal neurofilaments particularly well. Biosensis recommends optimal dilutions/concentrations should be determined by the end user.
Specificity:	The specificity of this antibody has been confirmed by WB. This antibody reacts with both phosphorylated NF-H at approx 200 kDa and non-phosphorylated NF-H at 160 kDa.
Antibody Against:	Neurofilament Heavy, phosphorylated and non-phosphorylated
Cross-reactivity:	Rat and human. Predicted to react with other mammals due to sequence homology.
Form:	Lyophilised
Appearance:	White powder
Reconstitution:	Reconstitute in sterile distilled water. Centrifuge to remove any insoluble material.
Storage:	After reconstitution of lyophilised antibody, aliquot and store at -20C for a higher stability. Avoid freeze-thaw cycles.
Expiry Date:	12 months after purchase

FOR RESEARCH USE ONLY

Rabbit polyclonal antibody to Neurofilament Heavy, phosphorylated and non-phosphorylated: Whole serum

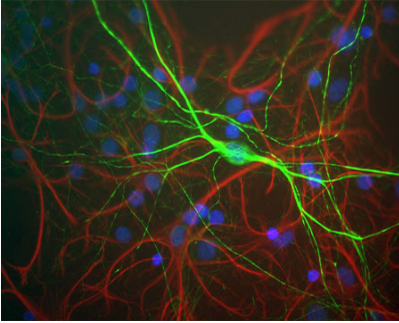


Image shows mixed neuron/glia rat brain cultures stained with Rabbit polyclonal antibody to Neurofilament Heavy R-1389-50 (green) and Chicken polyclonal antibody to Glial Fibrillary Acidic Protein C-1373-50 (red). The neurofilament NF-H antibody binds to phosphorylated axonal forms of NF-H and non-phosphorylated dendritic and perikaryal forms.

biosensis

FOR RESEARCH USE ONLY
