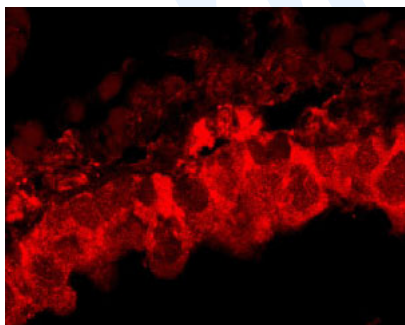


Rabbit polyclonal antibody to Peroxiredoxin-1 (103-116): whole serum

Catalogue No.:	R-1590-100
Description:	Peroxiredoxin-1 has a role in redox regulation of the cell.
Batch No.:	See product label
Unit size:	100 ug
Antigen:	A synthetic peptide (PLVSDPKRTIAQDY) corresponding to the region 103-116 amino acids of human Peroxiredoxin-1 conjugated to diphtheria toxin.
Other Names:	Peroxiredoxin-1; Natural killer cell-enhancing factor A; NKEF-A; Proliferation-associated gene protein; PAG; Thioredoxin peroxidase 2; Thioredoxin-dependent peroxide reductase 2; PRDX1; PAGA; PAGB; TDPX2;
Accession:	Q06830 PRDX1_HUMAN;
Produced in:	Rabbit
Applications:	IHC, WB, ELISA. This antibody works in IHC on frozen or wax embedded tissues. Antigen retrieval has been used in testing but may not be necessary. Typical working dilutions for light microscopy are 1:500 to 1:1,000 and IF of 1:50 to 1:100. For WB a dilution range of 1: 1,000 to 1: 4,000 is recommended. A dilution of 1: 1,000 to 1: 4,000 is recommended for ELISA. This antibody stains non-ciliated bronchiolar cells in rat airways and specific kidney tubule cells. Biosensis recommends optimal dilutions/concentrations should be determined by the end user.
Specificity:	Human and rat Peroxiredoxin 1
Cross-reactivity:	Human; rat;
Form:	Lyophilized serum with 0.02% thimerosal
Reconstitution:	Reconstitute in sterile distilled water. Centrifuge to remove any insoluble material.
Storage:	At least 12 months after purchase at 2-8C (lyophilized formulations). After reconstitution, aliquot and store at -20C for a higher stability. Avoid freeze-thaw cycles.



Immunohistochemical staining of non-ciliated bronchiolar cells in rat airways. Incubated with Rabbit polyclonal antibody to Peroxiredoxin-1 (R-1590-100) at 1:100. Secondary antibody Jackson donkey anti-rabbit conjugated to Cy3 at 1:200.

FOR RESEARCH USE ONLY