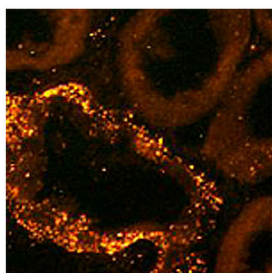


Rabbit polyclonal antibody to rat Atrial Natriuretic Peptide (123-150)

Catalogue No.:	R-1500-50
Description:	The hormone Atrial natriuretic peptide (ANP) is produced by cardiomyocytes and is secreted into the bloodstream. ANP acts on convoluted tubules in kidney reducing sodium absorption which results in reducing the blood pressure.
Batch No.:	See product label
Unit size:	50 ug
Antigen:	Synthetic rat Atrial natriuretic peptide (123-150 aa) conjugated to BSA.
Sequence:	SLRRSSCFGGRIDRIGAQSGLCNSFRY
Antigen Location:	123-150
Other Names:	Atrial natriuretic factor; ANF; Prepronatriodilatin;
Accession:	P01161 ANF_RAT;
Produced in:	Rabbit
Applications:	A dilution of 5-10 ug/mL is recommended for immunohistochemistry using formalin fixed and paraffin embedded tissues and for 4% paraformaldehyde fixed frozen tissues. A dilution of 5-15 ug/mL is recommended for immunofluorescence. Biosensis recommends optimal dilutions/concentrations should be determined by the end user.
Species Against:	Rat
Antibody Against:	Atrial Natriuretic Peptide
Cross-reactivity:	Human; mouse; rat. Highly conserved and expected to interact with feline, canine, porcine, bovine, and equine ANP.
Form:	Lyophilised with BSA
Appearance:	White powder
Reconstitution:	Reconstitute in 0.05 mL of PBS (pH 7.4). Centrifuge to remove any insoluble material.
Storage:	At least 12 months after purchase at 2 - 8C (lyophilized formulations). After reconstitution, aliquot and store at -20C for up to 6 months for a higher stability and at 2-8C with an appropriate antibacterial agent for up to 2 weeks. Avoid freeze-thaw cycles
Expiry Date:	12 months after purchase (lyophilized)



Immunohistochemical staining in convoluted tubules in rat kidney. 4% paraformaldehyde fixed rat kidney cryostat sections (10 µm) were incubated overnight at 4°C with Rabbit polyclonal antibody to rat Atrial Natriuretic Peptide (10 µg/ml) followed by incubation with donkey anti-rabbit Rhodamine Red conjugated secondary antibody (1:200).

FOR RESEARCH USE ONLY