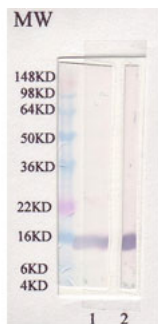


## Rabbit polyclonal antibody to rat Leptin: Whole serum

<b>Catalogue No.:</b>	R-1553-100
<b>Description:</b>	Leptin is secreted by white adipocytes and functions as part of a signaling pathway that can inhibit food intake and/or regulate energy expenditure to maintain constancy of the adipose mass. Leptin has a variety of other roles including endocrine functions, regulation of immune and inflammatory responses, hematopoiesis, angiogenesis and wound healing (Ref Entrez Gene).
<b>Batch No.:</b>	See product label
<b>Unit size:</b>	100 uL
<b>Antigen:</b>	Recombinant rat Leptin protein
<b>Other Names:</b>	Leptin; Obesity factor; Lep; Ob; Obese protein;
<b>Accession:</b>	P41159 LEP_HUMAN;
<b>Produced in:</b>	Rabbit
<b>Applications:</b>	WB and ELISA. Suggested dilution of 1:1,000-1:4,000. Biosensis recommends that the optimal working dilution should be determined by the end user.
<b>Cross-reactivity:</b>	Mouse, Rat
<b>Form:</b>	Liquid. PBS with 0.02% Sodium Azide
<b>Storage:</b>	Short term storage at 2-8C for one week. At -20C as an undiluted liquid for up to 12 months.
<b>Expiry Date:</b>	12 months after purchase



Western blot analysis of leptin in Rat. Lane 1: Rabbit polyclonal antibody to rat Leptin (R-1553-100) at 1:1,000 Lane 2: Chicken polyclonal antibody to rat Leptin (C-1515-500) at 1:1,000

---

FOR RESEARCH USE ONLY