

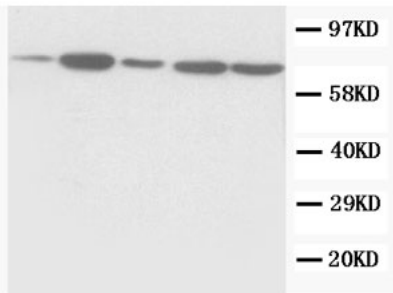
## Rabbit polyclonal antibody to Succinate dehydrogenase [ubiquinone] flavoprotein subunit (641-656): Affinity purified

<b>Catalogue No.:</b>	R-1348-100
<b>Description:</b>	Flavoprotein subunit of succinate dehydrogenase (SDH) that is involved in complex II of the mitochondrial electron transport chain and is responsible for transferring electrons from succinate to ubiquinone (coenzyme Q) (Ref: SWISSPROT).
<b>Batch No.:</b>	See product label
<b>Unit size:</b>	100 ug
<b>Antigen:</b>	A synthetic peptide (YRPVIDKTLNEADCAT) corresponding to a region (641-656 aa) from the C-terminus of human Succinate dehydrogenase [ubiquinone] flavoprotein subunit (SDNA).
<b>Sequence:</b>	YRPVIDKTLNEADCAT
<b>Antibody Type:</b>	Antiserum
<b>Other Names:</b>	Succinate dehydrogenase [ubiquinone] flavoprotein subunit; mitochondrial; Flavoprotein subunit of complex II; Fp; SDH2; SDHF; DHSA;
<b>Accession:</b>	P31040 DHSA_HUMAN;
<b>Produced in:</b>	Rabbit
<b>Applications:</b>	Immunohistochemistry (IHC) and Western Blotting (WB). A concentration of 1.0 ug/mL is recommended for WB. Human SDHA (precursor) has a predicted length of 664 residues and MW of 73 kDa. A concentration of 2.0 ug/mL is recommended for IHC to detect the protein in formalin fixed and paraffin embedded tissues. Heat mediated antigen retrieval is required. Biosensis recommends optimal dilutions/concentrations should be determined by the end user.
<b>Specificity:</b>	The specificity of this antibody has been confirmed by WB and IHC against the antigen.
<b>Antibody Against:</b>	Succinate dehydrogenase [ubiquinone] flavoprotein subunit
<b>Cross-reactivity:</b>	Human (WB); rat (WB, IHC-P); predicted to react with mouse due to sequence homology;
<b>Form:</b>	Lyophilised with 5mg BSA, 0.9mg NaCl, 0.2mg Na <sub>2</sub> HPO <sub>4</sub> , 0.05mg Thimerosal, 0.05mg NaN <sub>3</sub>
<b>Appearance:</b>	Lyophilized white powder
<b>Reconstitution:</b>	Reconstitute in 100 uL of sterile distilled water to achieve an antibody concentration of 1 mg/mL. Centrifuge to remove any insoluble material.
<b>Storage:</b>	At least 12 months after purchase at 2-8C (lyophilized formulations). After reconstitution, aliquot and store at -20C for a higher stability. Avoid freeze-thaw cycles.
<b>Expiry Date:</b>	12 months after purchase

---

FOR RESEARCH USE ONLY

## **Rabbit polyclonal antibody to Succinate dehydrogenase [ubiquinone] flavoprotein subunit (641-656): Affinity purified**



Western Blot using Rabbit polyclonal antibody to SDHA: Lane 1: MCF-7 Whole cell lysate Lane 2: Hela Whole cell lysate Lane 3: Jurkat Whole cell lysate Lane 4: HT1080 Whole cell lysate Lane 5: Colo320 Whole cell lysate

biosensis

---

FOR RESEARCH USE ONLY