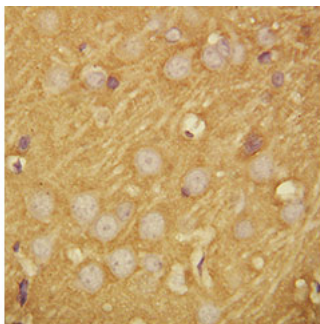


Rabbit polyclonal antibody to Synaptosomal-associated protein 25 (187-201): Affinity purified

Catalogue No.:	R-1356-100
Description:	SNAP25 forms part of the SNARE core complex and associates with proteins involved in vesicle docking and membrane fusion (Ref: SWISSPROT).
Batch No.:	See product label
Unit size:	100 ug
Antigen:	A synthetic peptide (SNKTRIDEANQRATK) corresponding to a region (187-201 aa) from the C-terminus of human Synaptosomal-associated protein 25 (SNAP25).
Sequence:	SNKTRIDEANQRATK
Antibody Type:	Antiserum
Other Names:	SNAP-25; Super protein; SUP; Synaptosomal-associated 25 kDa protein; Snap25; Snap;
Accession:	P60881 SNAP25_RAT;
Produced in:	Rabbit
Applications:	Immunohistochemistry (IHC) and Western Blotting (WB). A concentration of 1.0 ug/mL is recommended for WB. Rat SNAP25 (isoform SNAP-25b) has a predicted length of 206 residues and MW of 23 kDa. A concentration of 1.0 ug/mL is recommended for IHC to detect the protein in formalin fixed and paraffin embedded tissues. Biosensis recommends optimal dilutions/concentrations should be determined by the end user.
Specificity:	The specificity of this antibody has been confirmed by WB and IHC against the antigen.
Antibody Against:	Synaptosomal-associated protein 25
Cross-reactivity:	Rat; predicted to react with mouse and human due to sequence homology;
Form:	Lyophilised with 5mg BSA, 0.9mg NaCl, 0.2mg Na ₂ HPO ₄ , 0.05mg Thimerosal, 0.05mg Na ₃
Appearance:	Lyophilized white powder
Reconstitution:	Reconstitute in 100 uL of sterile distilled water to achieve an antibody concentration of 1 mg/mL. Centrifuge to remove any insoluble material.
Storage:	At least 12 months after purchase at 2-8C (lyophilized formulations). After reconstitution, aliquot and store at -20C for a higher stability. Avoid freeze-thaw cycles.
Expiry Date:	12 months after purchase



Immunohistochemical staining of rat brain tissue with Rabbit polyclonal antibody to Synaptosomal-associated protein 25.

FOR RESEARCH USE ONLY