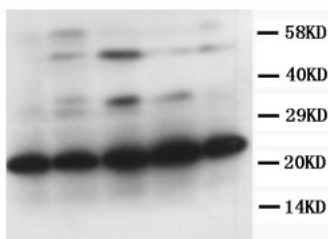


## Rabbit polyclonal antibody to Tissue factor pathway inhibitor 2 (170-186): Affinity purified

<b>Catalogue No.:</b>	R-1341-100
<b>Description:</b>	TFPI2 is a secreted protein found in umbilical vein endothelial cells, liver, placenta, heart, pancreas and maternal serum at advanced pregnancy (Ref:SWISSPROT).
<b>Batch No.:</b>	See product label
<b>Unit size:</b>	100 ug
<b>Antigen:</b>	A synthetic peptide (NVTRYFNPRTCDAF) corresponding to a region (170-186 aa) from human Tissue factor pathway inhibitor 2 (TFPI2).
<b>Sequence:</b>	NVTRYFNPRTCDAF
<b>Antibody Type:</b>	Antiserum
<b>Other Names:</b>	TFPI-2; Placental protein 5; PP5; TFPI-2;
<b>Accession:</b>	P48307 TFPI2_HUMAN;
<b>Produced in:</b>	Rabbit
<b>Applications:</b>	Immunohistochemistry (IHC) and Western Blotting (WB). A concentration of 1.0 ug/mL is recommended for WB. Human TFPI2 (precursor) has a predicted length of 235 residues and MW of 27 kDa. A concentration of 2.0 ug/mL is recommended for IHC to detect the protein in formalin fixed and paraffin embedded tissues. Heat mediated antigen retrieval is required. Biosensis recommends optimal dilutions/concentrations should be determined by the end user.
<b>Specificity:</b>	The specificity of this antibody has been confirmed by WB and IHC against the antigen.
<b>Antibody Against:</b>	Tissue factor pathway inhibitor 2
<b>Cross-reactivity:</b>	Human;
<b>Form:</b>	Lyophilised with 5mg BSA, 0.9mg NaCl, 0.2mg Na <sub>2</sub> HPO <sub>4</sub> , 0.05mg Thimerosal, 0.05mg Na <sub>3</sub>
<b>Appearance:</b>	Lyophilized white powder
<b>Reconstitution:</b>	Reconstitute in 100 uL of sterile distilled water to achieve an antibody concentration of 1 mg/mL. Centrifuge to remove any insoluble material.
<b>Storage:</b>	At least 12 months after purchase at 2-8C (lyophilized formulations). After reconstitution, aliquot and store at -20C for a higher stability. Avoid freeze-thaw cycles.
<b>Expiry Date:</b>	12 months after purchase



Western Blot using Rabbit polyclonal antibody to Tissue factor pathway inhibitor 2: Lane 1: MM453 Whole cell lysate Lane 2: MM231 Whole cell lysate Lane 3: Hela Whole cell lysate Lane 4: HT1080 Whole cell lysate Lane 5: Jurkat Whole cell lysate

FOR RESEARCH USE ONLY