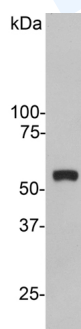


## Rabbit polyclonal antibody to Vimentin: whole serum

<b>Catalogue No.:</b>	R-1699-100
<b>Description:</b>	Vimentin is the major protein subunit of the 10nm or intermediate filaments protein found in many kinds of mesenchymal and epithelia cells. Vimentin is also found in many kinds of cells in tissue culture and in developing neuronal and astrocytic precursor cells in the central nervous system. Vimentin frequently forms copolymers with other intermediate filament proteins, such as GFAP (in many kinds of astrocytes), with desmin (in muscle cells) and neurofilament proteins (in developing neurons). Antibodies to vimentin are useful in studies of stem cells and generally to reveal the filamentous cytoskeleton.
<b>Batch No.:</b>	See product label
<b>Unit size:</b>	100 uL
<b>Antigen:</b>	Recombinant human Vimentin purified from E. coli.
<b>Antibody Type:</b>	Polyclonal
<b>Accession:</b>	P08670 VIME_HUMAN;
<b>Produced in:</b>	Rabbit
<b>Purity:</b>	Antiserum
<b>Applications:</b>	Western Blotting (WB) and Immunocytochemistry (ICC). A dilution of 1:5,000 - 1:10,000 is recommended for WB. A dilution of 1:1,000-5,000 is recommended for ICC. Biosensis recommends optimal dilutions/concentrations should be determined by the end user.
<b>Specificity:</b>	Specific for the 55 kDa Vimentin protein.
<b>Species Against:</b>	Human.
<b>Cross-reactivity:</b>	Mouse. It is expected that it will work on other mammal tissues (rat, cow, pig, horse).
<b>Form:</b>	Lyophilized.
<b>Reconstitution:</b>	Reconstitute in 50 uL sterile distilled water. Centrifuge to remove any insoluble material.
<b>Storage:</b>	After reconstitution of lyophilised antibody, aliquot and store at -20C for a higher stability. Avoid freeze-thaw cycles.
<b>Expiry Date:</b>	12 months after purchase



Western blot of crude extract of HeLa cells showing a single strong clean band at about 55kDa.

---

FOR RESEARCH USE ONLY