

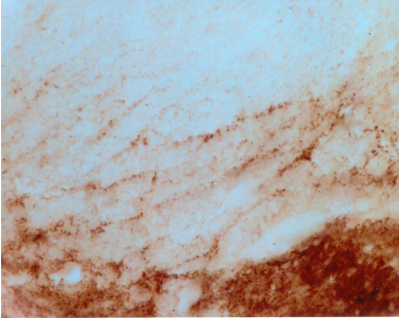
## Sheep antibody to beta synuclein (108-125): whole serum

<b>Catalogue No.:</b>	S-041-100
<b>Description:</b>	Beta-synuclein is a non-amyloid component of senile plaques found in Alzheimer disease. It could act as a regulator of SNCA aggregation. It protects neurons from staurosporine and 6 hydroxy dopamine -stimulated caspase activation in a p53-dependent manner. It localises to the cytoplasm and it is predominantly expressed in the brain where it is most concentrated in presynaptic nerve terminals. This protein is phosphorylated. This protein is also associated with the disease Brain iron accumulation type 1 (NBIA1).
<b>Batch No.:</b>	See product label
<b>Unit size:</b>	100 uL
<b>Antigen:</b>	A synthetic peptide (IEPLMEPEGSYEDPPQE) as part of human beta synuclein protein (aa: 108-125) conjugated to diphtheria toxoid has been used as the immunogen.
<b>Other Names:</b>	SNCB
<b>Accession:</b>	SYUB_HUMAN
<b>Produced in:</b>	Sheep
<b>Purity:</b>	Whole serum
<b>Applications:</b>	IHC. A dilution of 1:3000 to 1:8000 is recommended. Biosensis recommends optimal dilutions/concentrations should be determined by the end user.
<b>Specificity:</b>	Known to be specific for beta synuclein.
<b>Cross-reactivity:</b>	This antiserum is known to react with human, rat and other rodent beta synuclein.
<b>Form:</b>	Lyophilised
<b>Reconstitution:</b>	Reconstitute in 100 uL of sterile water. Centrifuge to remove any insoluble material.
<b>Storage:</b>	After reconstitution keep aliquots at -20C for a higher stability, and at 2-8C with an appropriate antibacterial agent. Glycerol (1:1) may be added for an additional stability. Avoid repetitive freeze/thaw cycles.
<b>Expiry Date:</b>	12 months after purchase
<b>References:</b>	<ol style="list-style-type: none"><li>1. Lundvig, et al Brain Res Mol Brain Res 134, 3-17 (Mar 24, 2005).</li><li>2. Bennett, Pharmacol Ther 105, 311-31 (Mar, 2005).</li><li>3. Vekrellis, et al., Mol Neurobiol 30, 1-21 (Aug, 2004).</li><li>4. Martin, et al., Protein Pept Lett 11, 229-37 (Jun, 2004).</li><li>5. Doherty, et al., Acta Neuropathol (Berl) 107, 169-75 (Feb, 2004).</li><li>6. Goedert, Curr Opin Genet Dev 11, 343-51 (Jun, 2001).</li><li>7. Saito, et al., J Neurol Sci 177, 48-59 (Aug 1, 2000).</li><li>8. Lucking et al. Cell Mol Life Sci. 2000 Dec;57(13-14):1894-908.</li><li>9. Kahle, et al., Ann N Y Acad Sci 920, 33-41 (2000).</li><li>10. Clayton, et al., Trends Neurosci 21, 249-54 (Jun, 1998).</li></ol>

---

FOR RESEARCH USE ONLY

## Sheep antibody to beta synuclein (108-125): whole serum



Immunohistochemical detection of beta synuclein in rat spinal cord using Sheep antibody to beta synuclein (108-125): whole serum, catalogue no. S-041-100, at a dilution of 1:4000.

biosensis

---

FOR RESEARCH USE ONLY