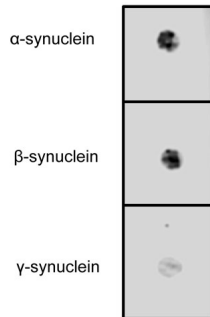


Sheep antibody to pan synuclein: affinity purified

Catalogue No.:	S-044-100
Batch No.:	See product label
Unit size:	100 ug
Antigen:	A synthetic peptide (AKEGVVAAAEEKTKQGV) as a consensus part of human alpha-, beta-, and gamma synuclein proteins conjugated to diphtheria toxoid has been used as the immunogen.
Accession:	SYUA_HUMAN SYUB_HUMAN SYUG_HUMAN
Produced in:	Sheep
Purity:	Affinity purified and dialysed against PBS. Does not contain preservative.
Applications:	IHC, WB. A concentration of 3 ug/mL is recommended for immunohistochemistry (frozen & paraffin embedded sections) and 1 ug/mL for western blot. Biosensis recommends optimal dilutions/concentrations should be determined by the end user.
Specificity:	Overlap specific immunohistochemical staining of alpha-, beta- and gamma synucleins
Cross-reactivity:	This antiserum recognises human and rat alpha-, beta- and gamma synucleins.
Form:	Lyophilised
Reconstitution:	Reconstitute in 100 uL of sterile water. Centrifuge to remove any insoluble material.
Storage:	After reconstitution keep aliquots at -20C for a higher stability, and at 2-8C with an appropriate antibacterial agent. Glycerol (1:1) may be added for an additional stability. Avoid repetitive freeze/thaw cycles.
Expiry Date:	12 months after purchase
References:	<ol style="list-style-type: none">1. Lundvig, et al Brain Res Mol Brain Res 134, 3-17 (Mar 24, 2005).2. Bennett, Pharmacol Ther 105, 311-31 (Mar, 2005).3. Vekrellis, et al., Mol Neurobiol 30, 1-21 (Aug, 2004).4. Martin, et al., Protein Pept Lett 11, 229-37 (Jun, 2004).5. Doherty, et al., Acta Neuropathol (Berl) 107, 169-75 (Feb, 2004).6. Goedert, Curr Opin Genet Dev 11, 343-51 (Jun, 2001).7. Saito, et al., J Neurol Sci 177, 48-59 (Aug 1, 2000).8. Lucking et al. Cell Mol Life Sci. 2000 Dec;57(13-14):1894-908.9. Kahle, et al., Ann N Y Acad Sci 920, 33-41 (2000).10. Clayton, et al., Trends Neurosci 21, 249-54 (Jun, 1998).

FOR RESEARCH USE ONLY

Sheep antibody to pan synuclein: affinity purified



Dot blot of human synuclein proteins (20 ng/dot) with S-044-100, diluted to 1 ug/mL.

biosensis

FOR RESEARCH USE ONLY