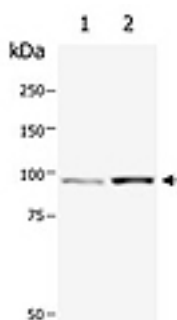


Sheep polyclonal antibody to dephosphorylated Catenin beta (28-46): Affinity purified

Catalogue No.:	S-1233-100
Description:	Catenin beta is an adherens junction protein and has a role in the regulation of cell adhesion and in signal transduction through the Wnt pathway. At least 2 isoforms are produced by alternative splicing.
Batch No.:	See product label
Unit size:	100 ug
Antigen:	A synthetic peptide (C-QSYLDSGIHSGATTTAPSL) corresponding to the amino acid region 28-46 of human Catenin beta coupled to carrier protein KLH. This antibody was designed to detect the active form of Catenin beta . The antibody exhibits a strong preference for dephosphorylated beta catenin protein by western blot but the antibody may show cross reactivity with phosphorylated catenin beta under certain conditions.
Other Names:	Catenin beta-1; Beta-catenin; CTNNB1; CTNNB; _-Catenin;
Accession:	P35222 CTNB1_HUMAN;
Produced in:	Sheep
Purity:	Affinity purified
Applications:	Western Blotting (WB) and Immunocytochemistry. A concentration of 2.0 ug/mL is recommended for WB. Human Catenin beta (isoform 1) has a predicted length of 781 residues and MW of 86 kDa. It has been observed as a 92 kDa band in SDS-reducing gels. A concentration of 4.0 ug/mL is recommended for Immunocytochemistry. Biosensis recommends optimal dilutions/concentrations should be determined by the end user.
Specificity:	The specificity of this antibody has been confirmed by WB against the antigen.
Cross-reactivity:	Human; mouse; rat;
Form:	Lyophilised from 10 mM sodium HEPES (pH 7.5), 150 mM NaCl, and 0.05 % sodium azide.
Reconstitution:	Reconstitute in 100 uL of sterile water. Centrifuge to remove any insoluble material.
Storage:	At least 12 months after purchase at 2-8C (lyophilized formulations). After reconstitution, aliquot and store at -20C for a higher stability. Avoid freeze-thaw cycles.
Expiry Date:	12 months after purchase



Western blot analysis of Catenin beta (S-1233-100) in extracts from HepG2 cells: untreated (Lane 1) and treated with GSK3 inhibitor (Lane 2).

FOR RESEARCH USE ONLY